

Community Consultation and Engagement

ROSCOMMON

Integrated Urban

Strategy



Rialtas na hÉireann
Government of Ireland



Arna chomhchistiú ag
an Aontas Eorpach
Co-funded by the
European Union



Tionól Réigiúnach
An Tuaiscirt & An Iarthair
Northern & Western
Regional Assembly



Comhairle Contae
Ros Comáin
Roscommon
County Council

BDP.

Built Original.

Overview

- Policy Frameworks
 - The Place
 - Potential
- Questionnaire and Q&A



THRIVE - Funding

Town Centre First Heritage Revival Scheme



Rialtas na hÉireann
Government of Ireland



Arna chomhchistiú ag
an Aontas Eorpach
Co-funded by the
European Union



Renewed Sense of
Place



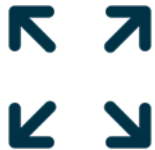
Integrated
Strategies



Local Influence



Global Connection



Compact Growth



Innovation Through
Intervention



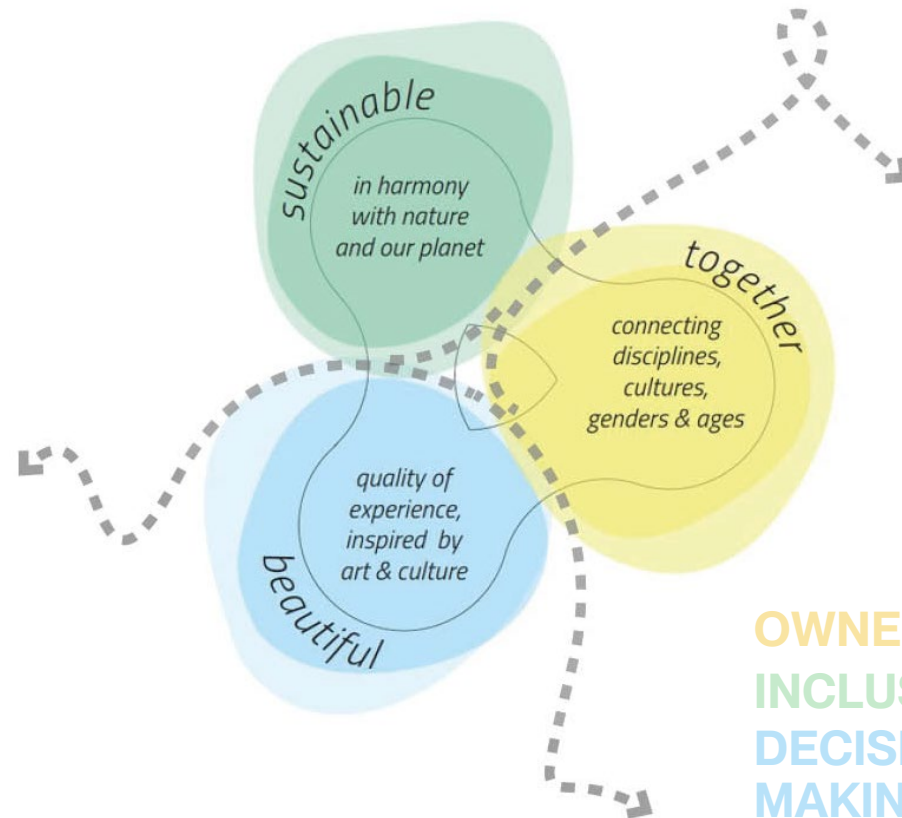
Adaptive Reuse of
Built Heritage



Climate Awareness
and Responsibility

New European Bauhaus

COMMON
OBJECTIVE
COLLABORATIVE
FRAMEWORK
FOSTERING
EXCHANGE
MULTI- LEVEL
ENGAGEMENT
LOCAL
APPROACH
GLOBAL
DIMENSION



KNOWLEDGE
EXCHANGE
PROFESSIONALS
CROSS
POLLINATION
INTEGRATED
SOLUTIONS
TRANSDISCIPLINARY
APPROACH
EXPERTISE
COMMON
SOLUTIONS

OWNERSHIP
INCLUSION
DECISION
MAKING
PARTICIPATORY
PROCESS
SOCIETY

The Place



Roscommon Market Square

Roscommon CoCo.

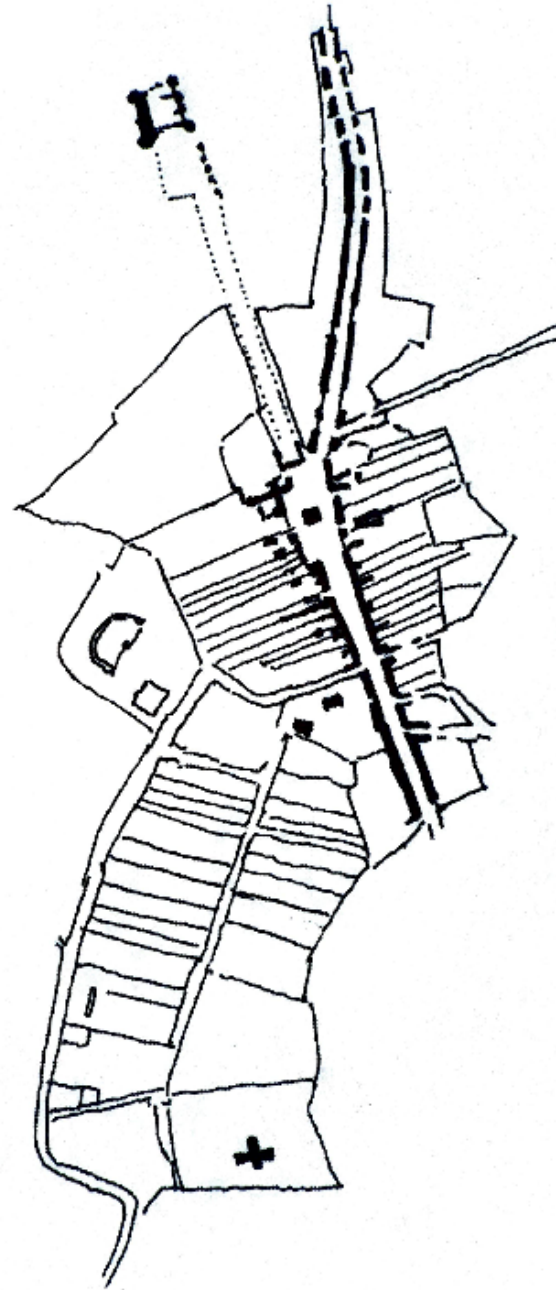
Roscommon Library

Roscommon Trian Station

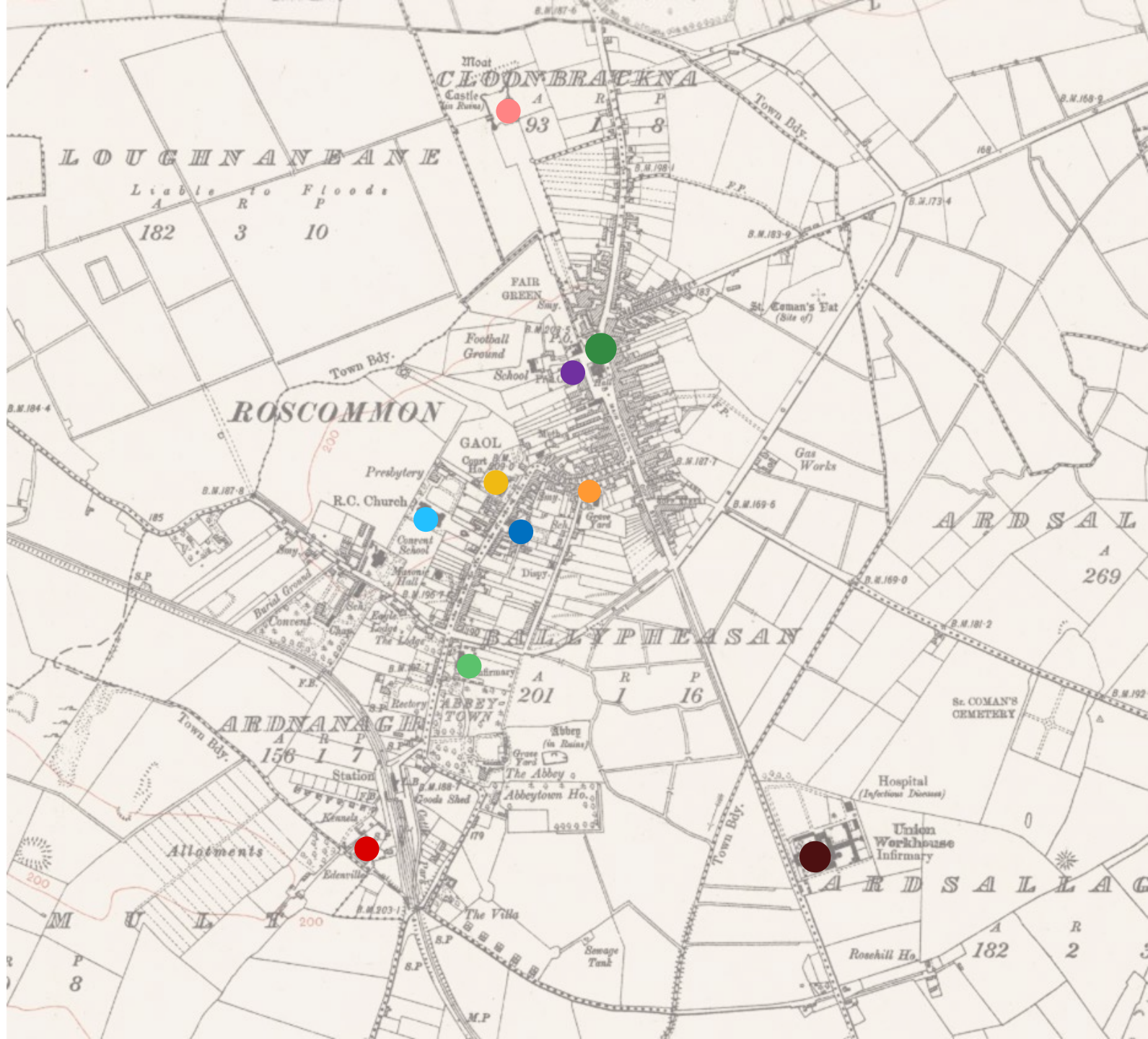
Roscommon Town

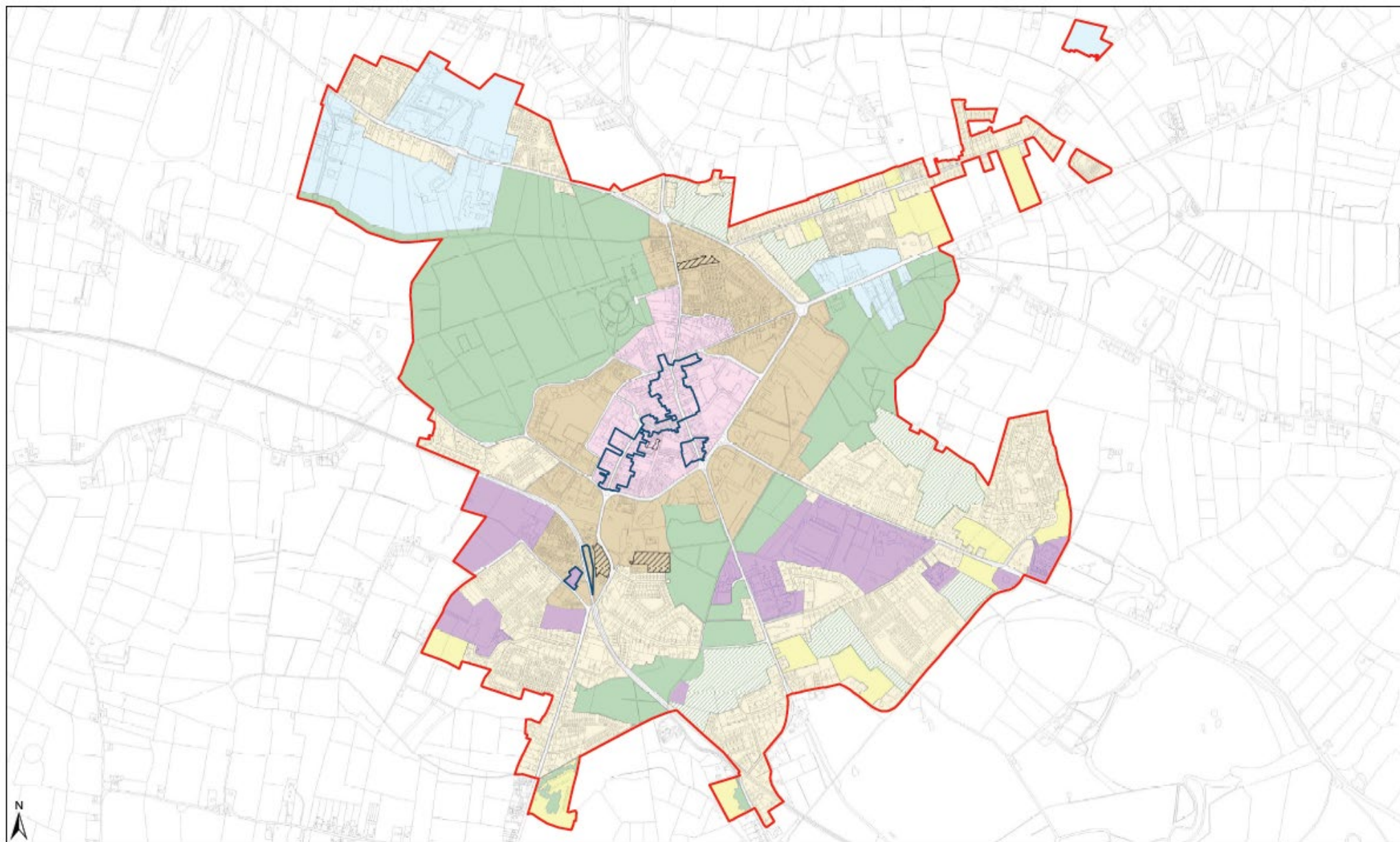
A Historic Town

- County Town of County Roscommon
- Historically Rich Town Core
- Architecturally Valuable
- Culturally Vibrant



Cultural Assets





CYAL50285732
 © Ordnance Survey Ireland/Government of Ireland.

Legend

- | | | |
|--|--|--|
| <ul style="list-style-type: none"> Plan Boundary Residential Opportunity Sites Architectural Conservation Areas New Residential Agriculture | <ul style="list-style-type: none"> Existing Residential Town Core Outer Core Strategic Industrial / Enterprise Zones | <ul style="list-style-type: none"> Green Belt Community Infrastructure |
|--|--|--|



**Roscommon Town LAP
 2024 - 2030**

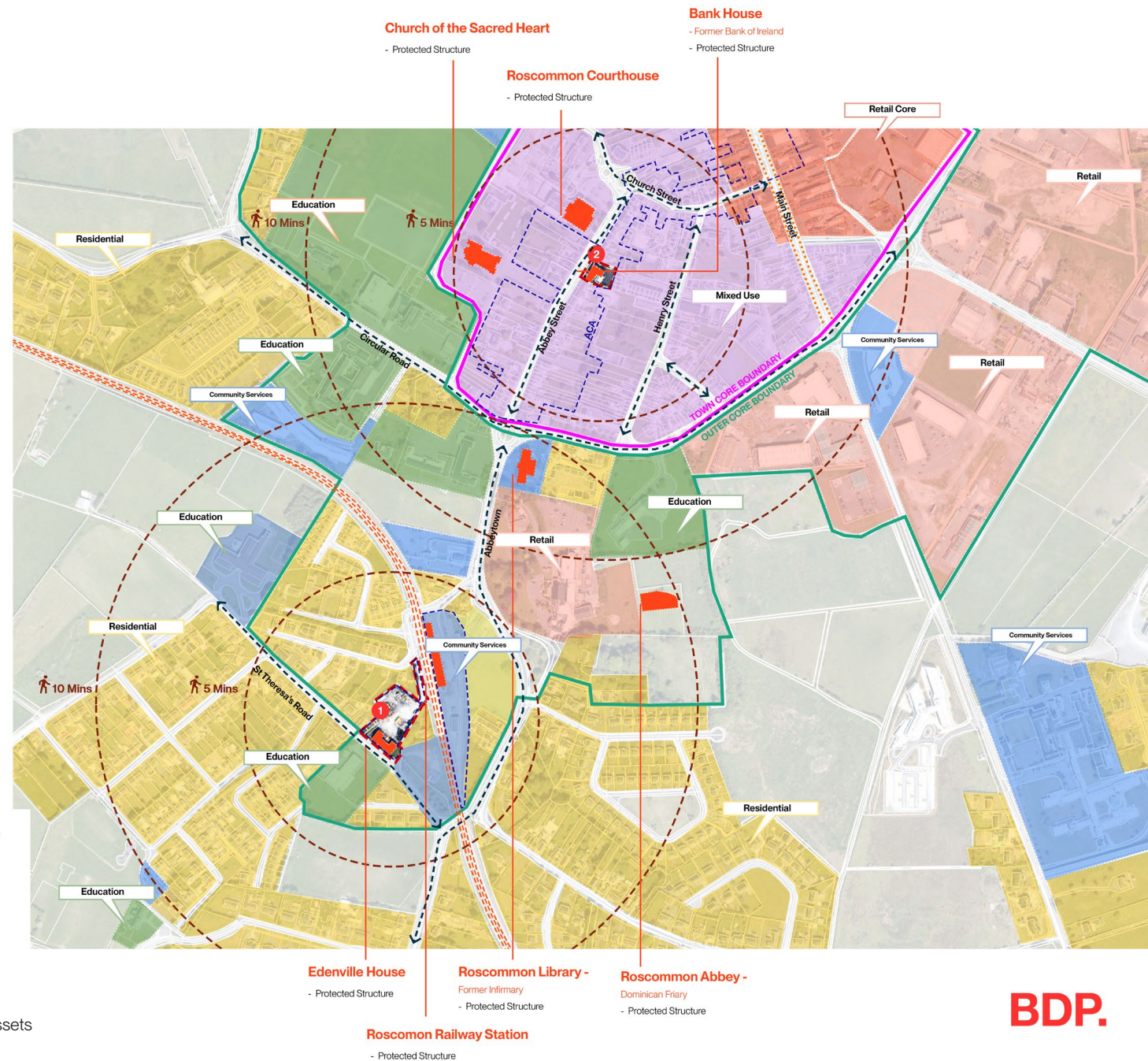
**Map 1a Land Use
 Zoning & Architectural
 Conservation Area (ACA)**



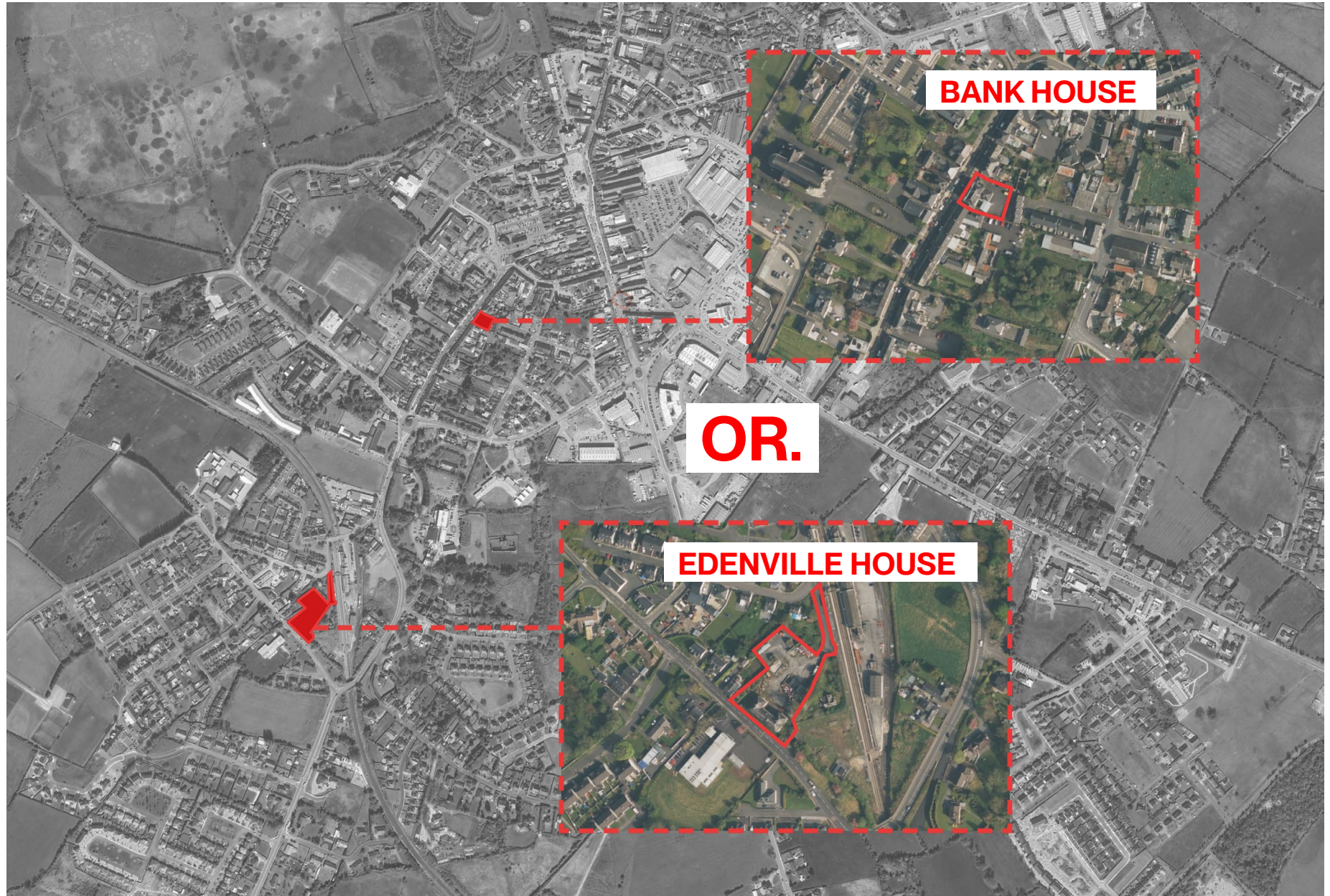
Planning Section,
 Roscommon County Council,
 Area an Chonaithe,
 Roscommon.
 Telephone: (090) 8637175
www.roscommoncoco.ie
 Date: July 2024
 Author: P.B.
 Scale: 1:15,000 @ A3

KEY

	Railway		Community Services
	LAP Outer Core		Retail
	Two Way Traffic		Education
	Site Boundary		Retail Core
	Site Boundary		Cultural Assets
	ACA		
	Mixed Use		
	Residential		



The Sites



Edenville House



BDP.

Built Original.



Edenville House

Former Roscommon Barracks



Bank House



BDP.

Built Original.



Bank House

Former Motor Tax Office



Edenville House



..... Historical Value



..... Central Location



..... Current Condition



..... Budget Friendly



..... Building Complexity



..... Connectivity



..... Residential Surroundings



..... Opportunity



..... Social Value

Bank House



We want to hear your thoughts

Please scan the QR code below to complete the questionnaire.



Alternatively:

Head to the THRIVE page on Roscommon County Council website or pick up a copy in the Library or at Aras an Contae.

Closing date is **Friday the 7th of March**

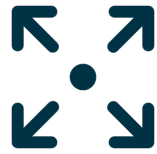
Bank House

Edenville House

GUIDING PRINCIPLES



**Renewed Sense
of Place**



Compact Growth



**Diversity and
Inclusion**



Innovation



**Global
Connections**



**Shared
Knowledge**



Adaptive Reuse



Sustainability